



Beaufort County Public Works
Stormwater Infrastructure
Project Summary

Project Summary: Country Manor Road Channel #1

Activity: Routine/Preventive Maintenance

Duration: 12/18/17-12/28/17

Narrative Description of Project:

Project improved 6,145 L.F. of drainage system. Cleaned out 6,145 L.F. of channel.

2018-559 / Country Manor Channel #1

	Labor Hours	Labor Cost	Equipment Cost	Material Cost	Contractor Cost	Indirect Labor	Total Cost
AUDIT / Audit Project	0.5	\$10.90	\$0.00	\$0.00	\$0.00	\$0.00	\$10.90
CCO / Channel - cleaned out	122.0	\$2,475.07	\$682.52	\$134.40	\$0.00	\$1,413.42	\$4,705.41
HAUL / Hauling	6.0	\$121.66	\$56.52	\$15.68	\$0.00	\$28.84	\$222.70
2018-559 / Country Manor Channel #1 Sub Total	128.5	\$2,607.63	\$739.04	\$150.08	\$0.00	\$1,442.26	\$4,939.00
Grand Total	128.5	\$2,607.63	\$739.04	\$150.08	\$0.00	\$1,442.26	\$4,939.00

Before

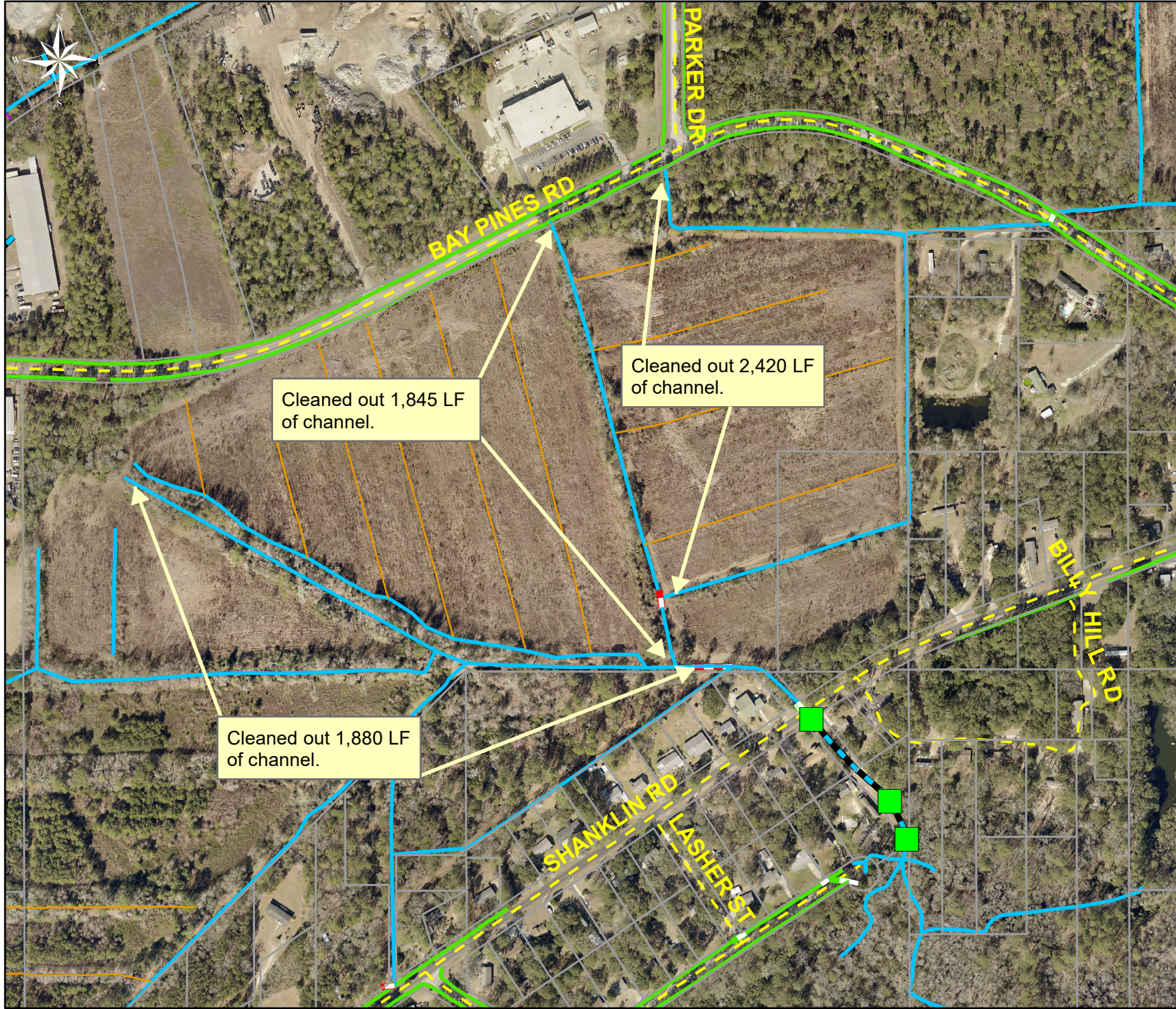


During



After





Project: Country Manor Road Channel #1

Activity: Routine/ Preventive Maintenance

Project #: 2018-559

Township/SW Dist: Port Royal Island/6

Completed: December 2017

Legend	
Drainage Type	
	Access Pipe
	Bleeder Pipe
	Channel Pipe
	Channel
	Stream
	Crossline Pipe
	Driveway Pipe
	Lateral
	Lateral Pipe
	River
	Road Pipe
	Roadside
	Roadside Pipe



1 inch = 410 feet

Prepared By: BC Stormwater Management Utility
 Date Print: 04/11/18
 File: C:\project summaries map\Country Manor Channel Road #1_2018-559